

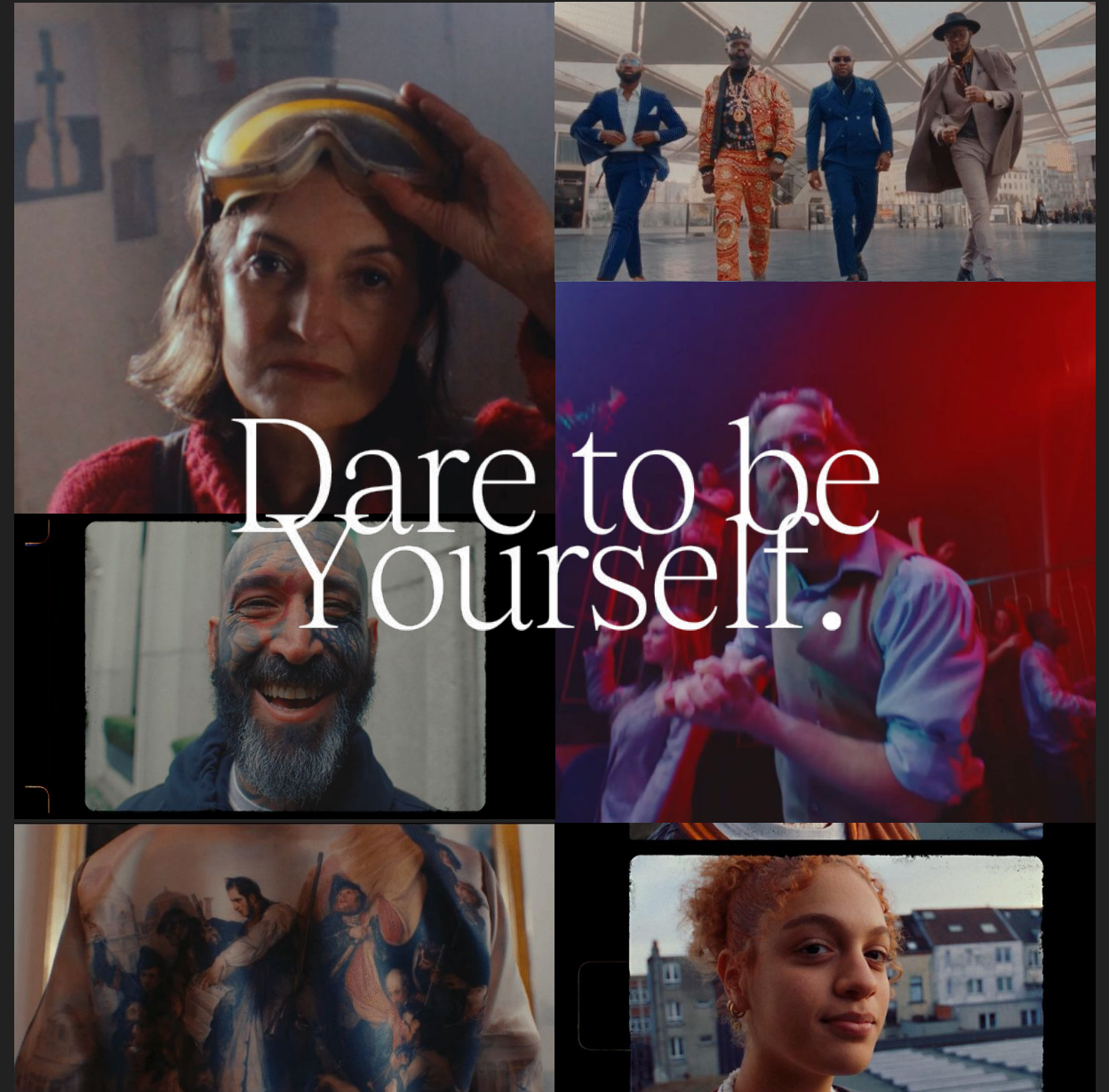
BRUSSELS

MICE

Why Brussels



“We’re the Capital of Europe, of course, and we’re also its capital of conviviality—international leaders and policy-makers rub elbows with artists, craftsmen and innovators all over the city.”

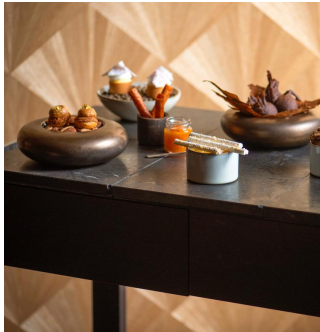


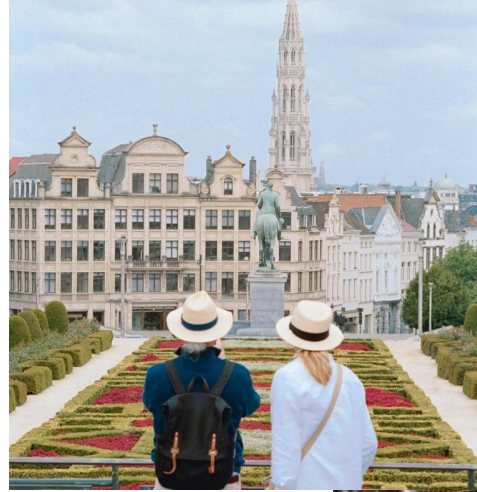
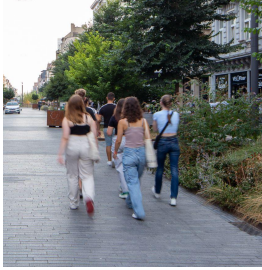


Europe's Most Welcoming City

The Avant-Garde of Food and Culture

Quality of life is savouring a region





A Walkable City

Quality of Life is Bikes, Trains & Walking Shoes

Unparalleled Access to the Centre of Power



BY PLANE

Direct flights to 200 destinations in 66 countries
Preferential group tariffs with Brussels Airlines



BY TRAIN

Eurostar & ICE high speed rail connections (France, UK, The Netherlands, Germany,...)

COMPACT CITY

Airport to City Centre connection in 20 minutes with 6 direct trains per hour.

Strategic Location

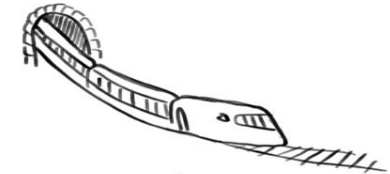
London
1H51



Paris
1H22

Koln
1H47

Berlin
1H25



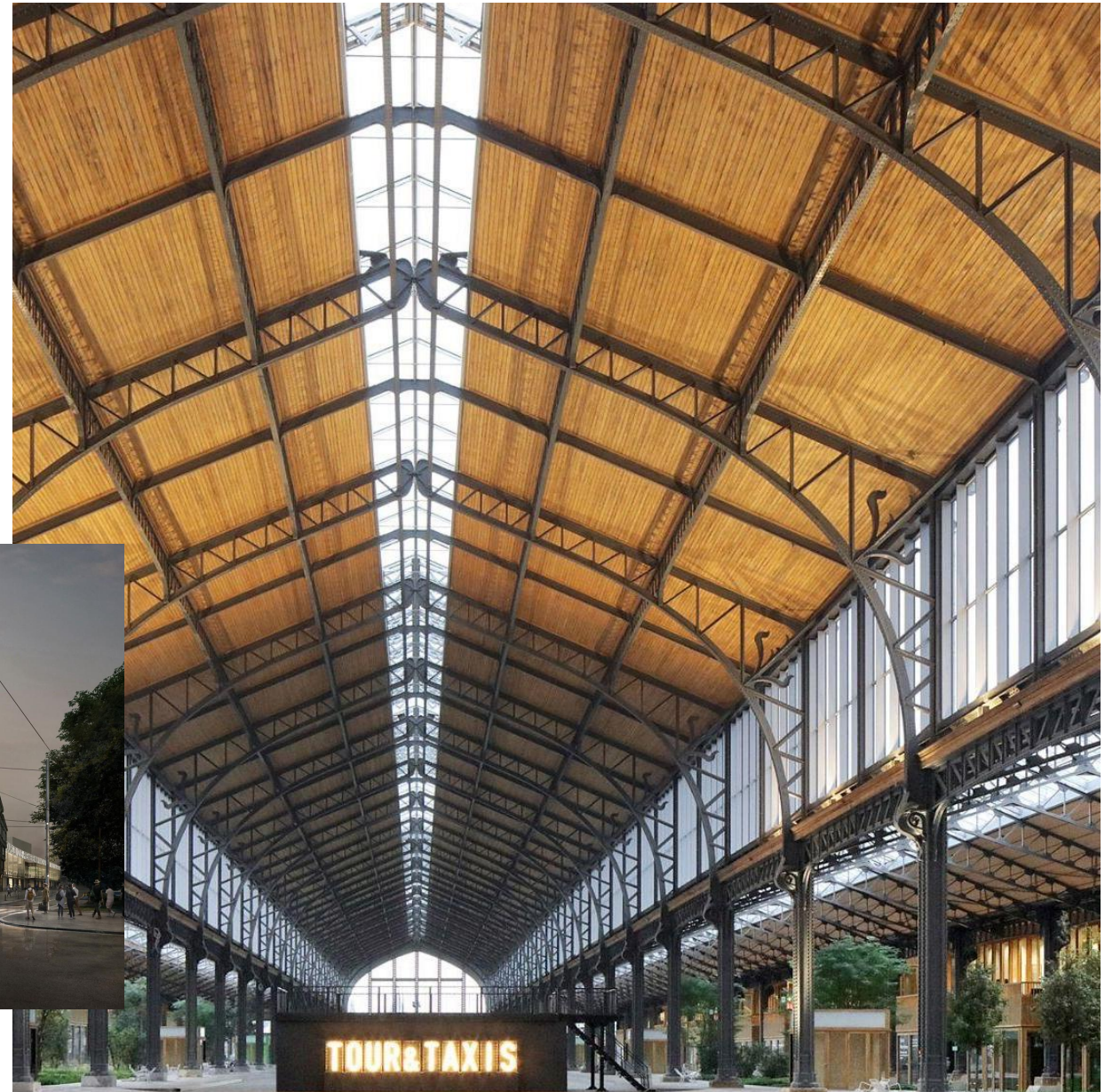
Pioneering New Futures

Brussels believes in a better tomorrow



Open to Change

An Ever-Evolving City





A Flexible System to Host Your Event Your Way

Precision meets playful



Expert Hosts For the After-Show

What happens in Brussels stays in Brussels



Because Sustainability Matters

We're pioneers of the circular economy



BRUSSELS BRUSSELS
BRUSSELS BRUSSELS
BRUSSELS BRUSSELS



Thank You

BRUSSELS

TRAVEL TRADE

Why Brussels



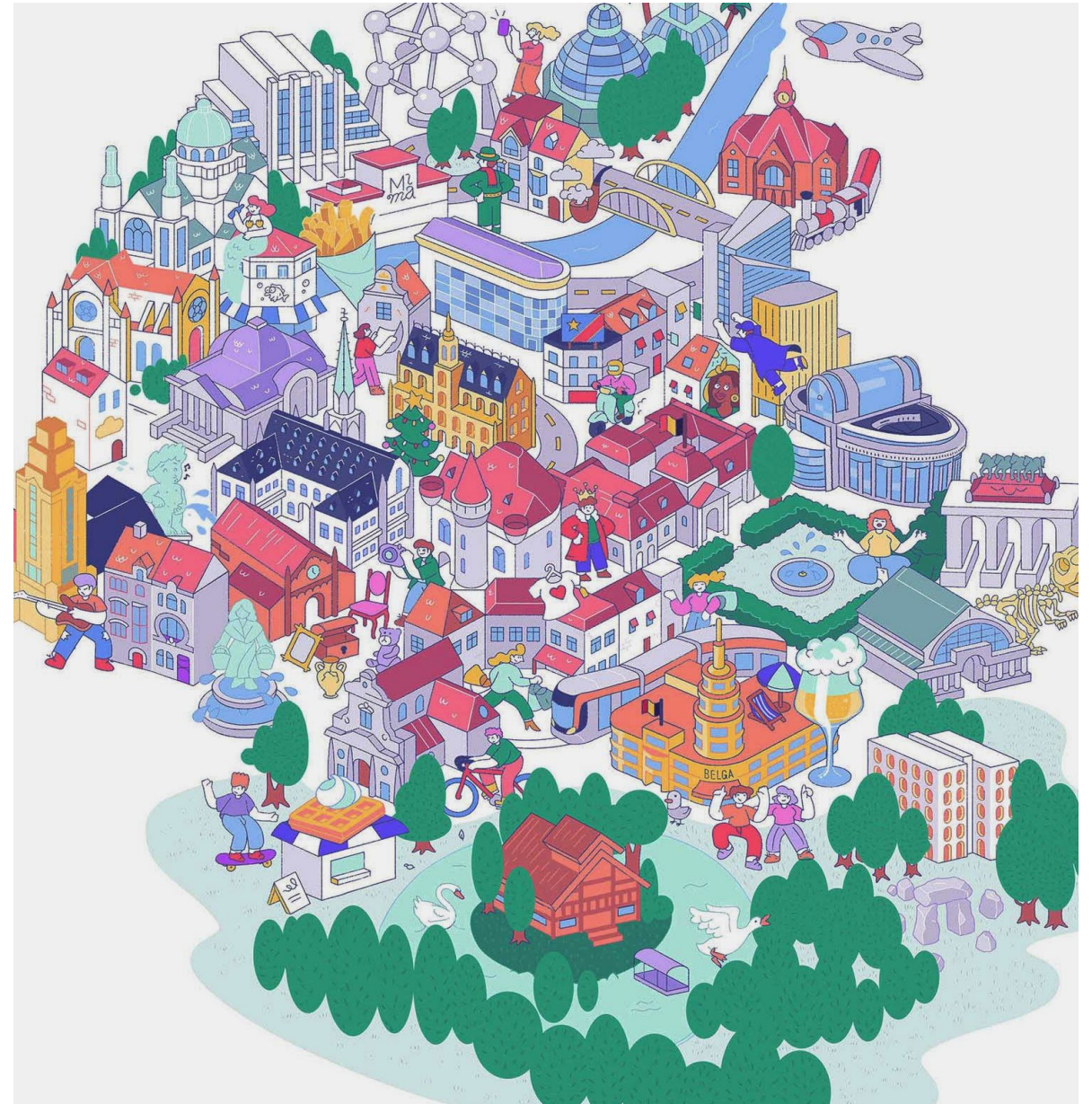
A MULTI-LAYERED, MULTI-FACETED CITY

Brussels is More than the Grand Place

Just as there's more to Paris than the Eiffel Tower and more to New York than Times Square, the Brussels Region is made up of 19 different municipalities and 118 neighbourhoods.

Each has its own history, community and culture. Each dares to be itself and invites visitors and residents to do the same.

One of them is certain going to make your talent, business and you feel at home.

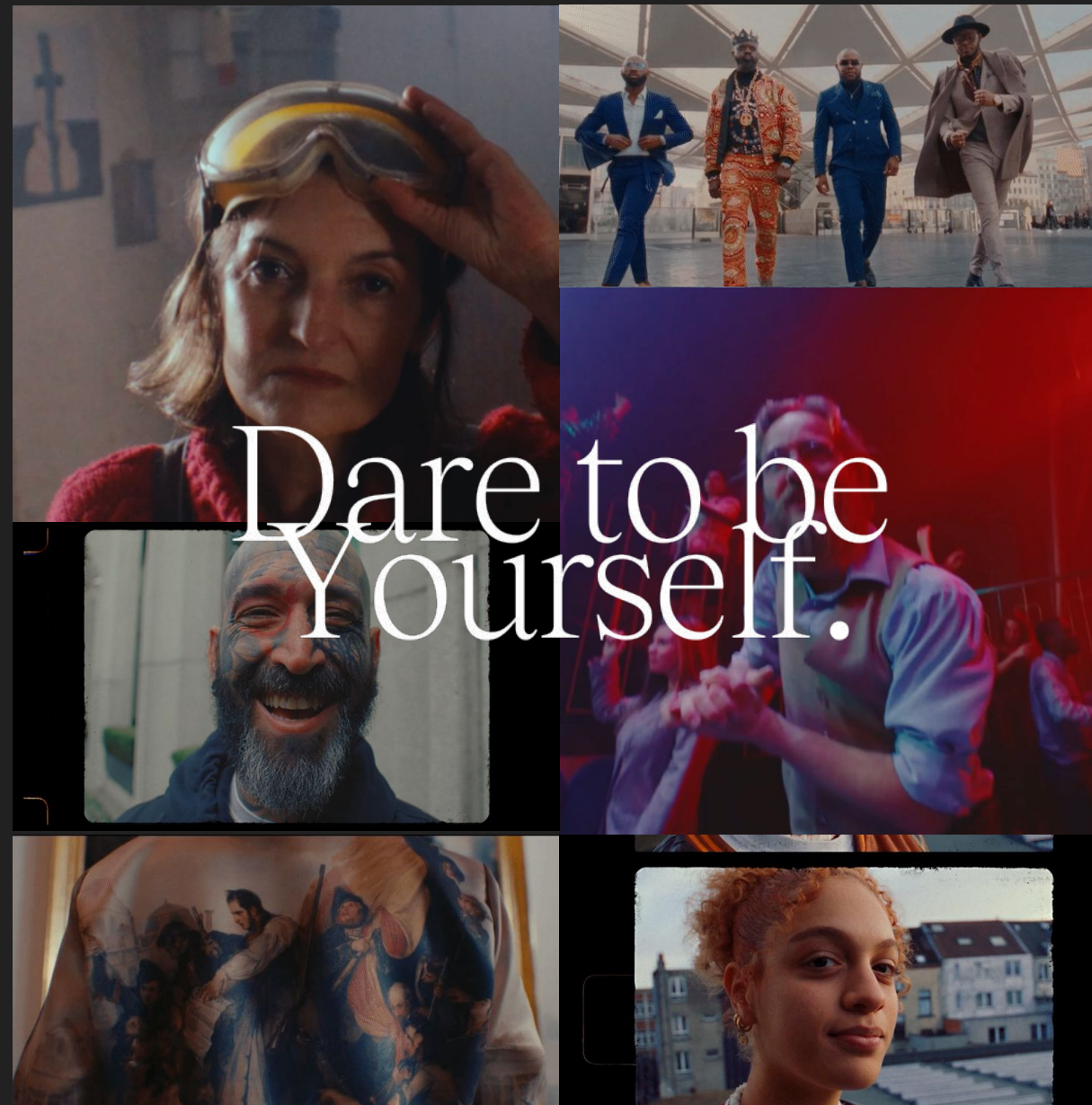




Europe's Most Diverse & Inclusive City

Welcoming means

We're proudly imperfect
believers in a better
world; artful embracers of
modern chaos;
progressive and principled
policymakers, innovators
and explorers.



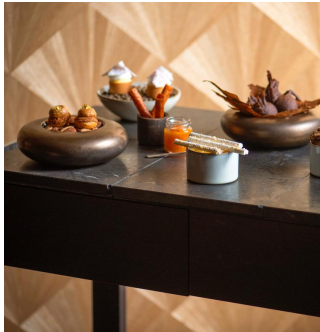
The Avant-Garde of Food and Culture

Culture is our favourite dessert.



The Avant-Garde of Food and Culture

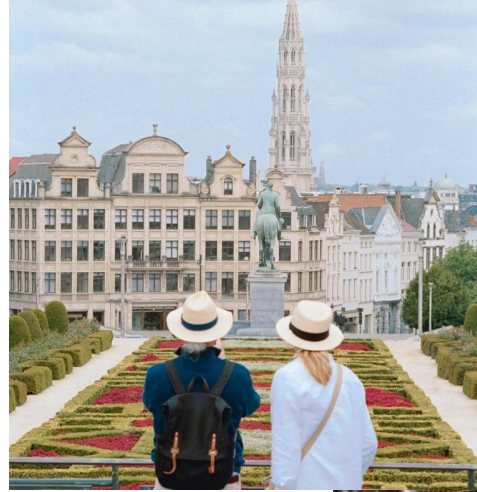
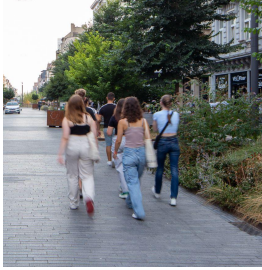
Quality of life is savouring a region



Expert Hosts For the After-Show

What happens in Brussels stays with you forever





A Walkable City

Quality of Life is Bikes, Trains & Walking Shoes

Because Sustainability Matters

We're pioneers of the circular economy.



People Shaping What's Next

A melting pot of talent solving
the world's challenges.



BY PLANE

Direct flights to 200 destinations in 66 countries
Preferential group tariffs with Brussels Airlines



BY TRAIN

Eurostar & ICE high speed rail connections (France, UK, The Netherlands, Germany,...)

COMPACT CITY

Airport to City Centre connection in 20 minutes with a direct train 6 times an hour

Strategic Location

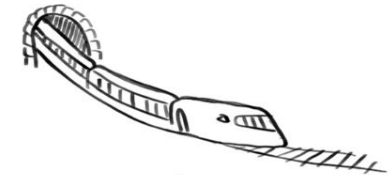
London
1H51



Paris
1H22

Koln
1H47

Berlin
1H25



Brussels is affordable and rich in discoveries of art, culture and cuisine.



Originators Welcome

Brussels loves free thinkers and creative makers



BRUSSELS BRUSSELS
BRUSSELS BRUSSELS
BRUSSELS BRUSSELS



Thank You

BRUSSELS

HIGH END

Why Brussels



A MULTI-LAYERED, MULTI-FACETED CITY

Brussels is More than the Grand Place

Just as there's more to Paris than the Eiffel Tower and more to New York than Times Square, the Brussels Region is made up of 19 different municipalities and 118 neighbourhoods.

Each has its own history, community and culture. Each dares to be itself and invites visitors and residents to do the same.

One of them is certain going to make your talent, business and you feel at home.

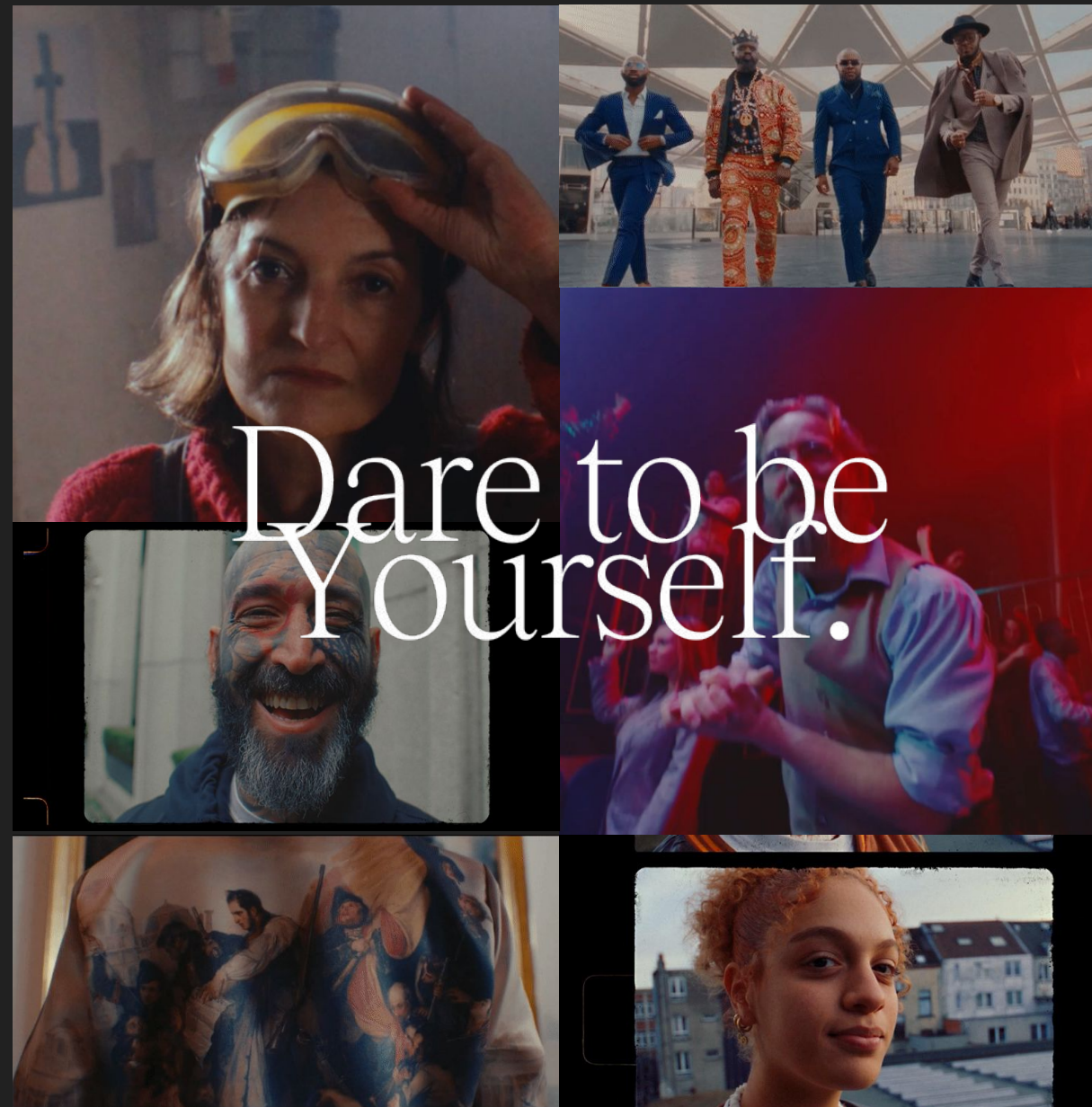




Europe's Most Diverse & Inclusive City

Love is love. Welcoming is welcoming.

We're proudly imperfect
believers in a better
world; artful embracers of
modern chaos;
progressive and principled
policymakers, innovators
and explorers.



The Avant-Garde of Food and Culture

Imagination is our favourite dessert.



The Avant-Garde of Food and Culture

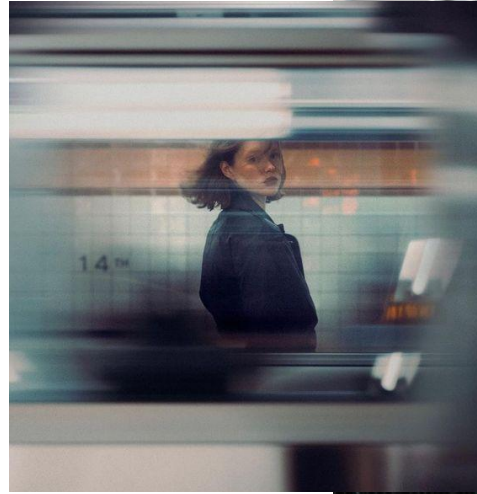
Quality of life is savouring a region



Expert Hosts For the After-Show

What happens in Brussels stays with you forever



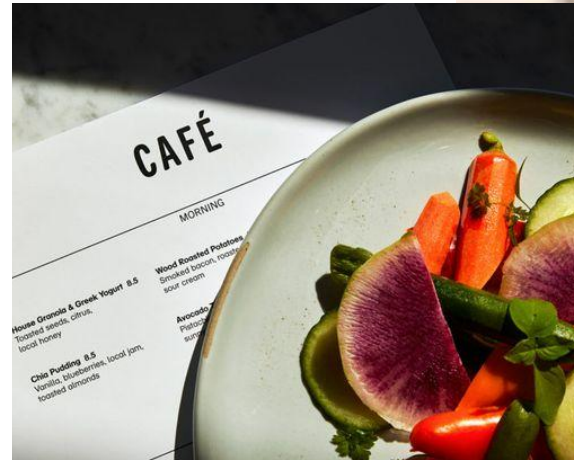


A Walkable City

Quality of Life is Bikes, Trains & Walking Shoes

Because Sustainability Matters

Pioneering the circular economy



People Shaping What's Next

A melting pot of talent solving the world's challenges.



BY PLANE

Direct flights to 200 destinations in 66 countries
Preferential group tariffs with Brussels Airlines



BY TRAIN

Eurostar & ICE high speed rail connections (France, UK, The Netherlands, Germany,...)

COMPACT CITY

Airport to City Centre connection in 20 minutes with a direct train 6 times an hour

Strategic Location

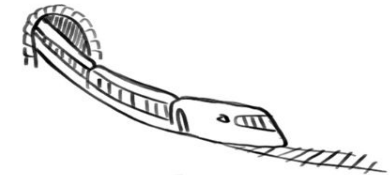
London
1H51



Paris
1H22

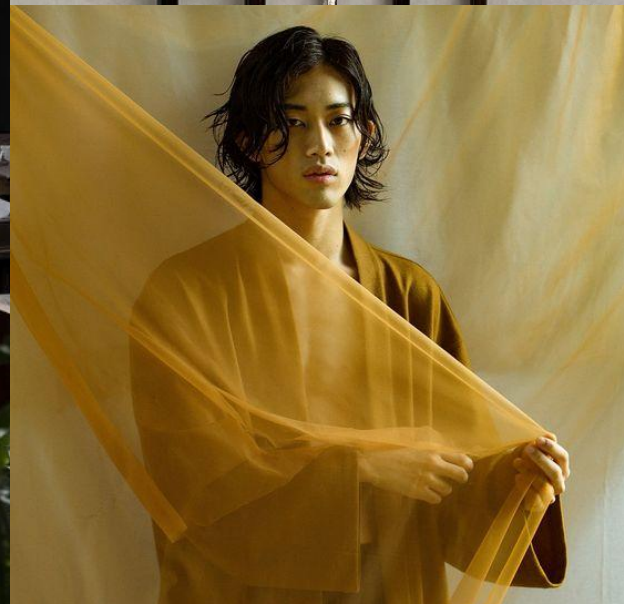
Koln
1H47

Berlin
1H25



Originators Welcome

Brussels loves free thinkers and creative makers



Contemporary Artistry

Brussels is a city of fertile imaginations.



BRUSSELS BRUSSELS
BRUSSELS BRUSSELS
BRUSSELS BRUSSELS



Thank You